



Belwood Lake Topography (pre-flood elevations)

Legend

Reservoir Extent @ 425 masl (CGVD28)

Reservoir Bottom Elevation - masl (CGVD28)
(Based on 1969 topographic mapping)

422 - 425

418 - 421

414 - 417

410 - 413

406 - 409

Watercourse

Belwood Lake C.A.

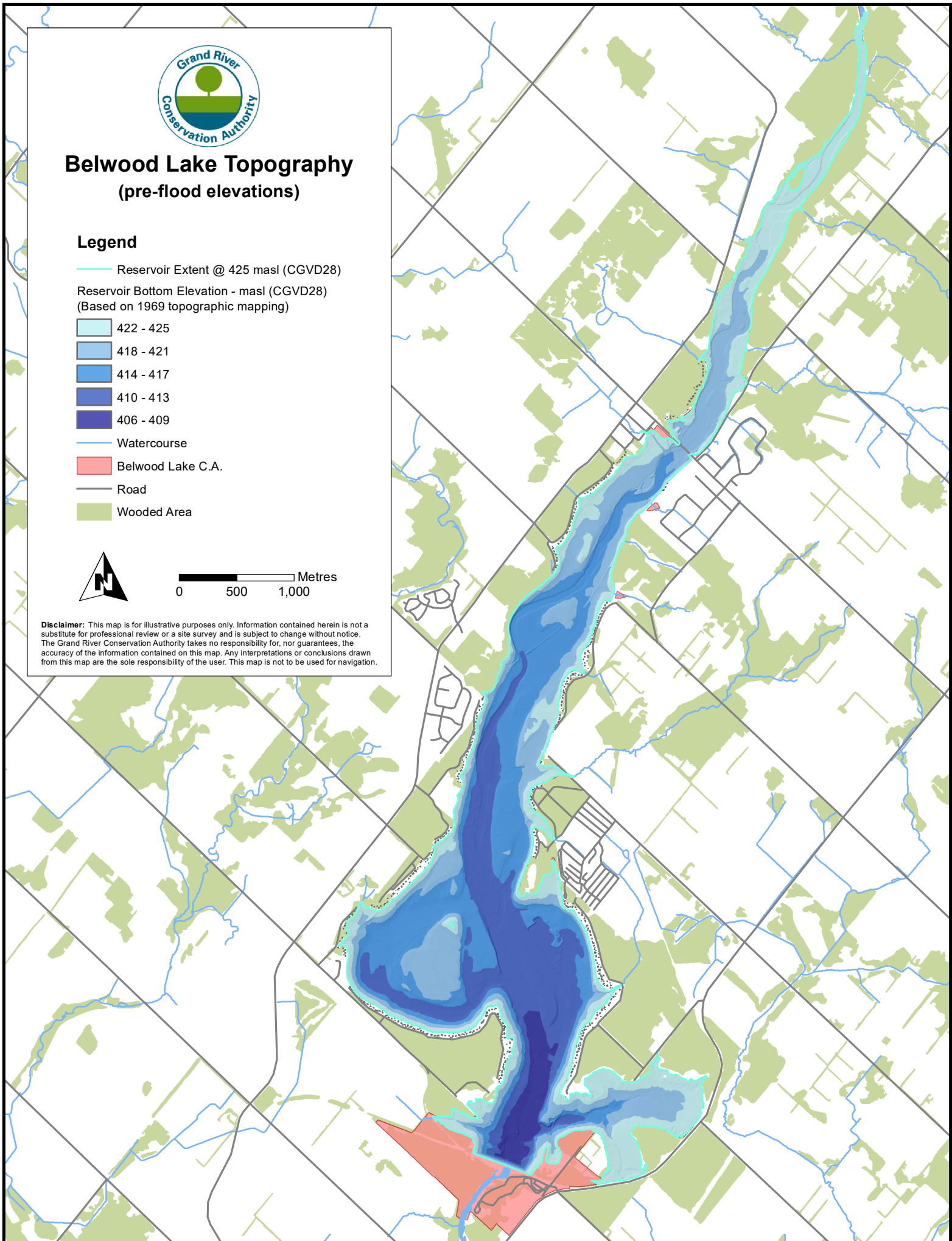
Road

Wooded Area



0 500 1,000 Metres

Disclaimer: This map is for illustrative purposes only. Information contained herein is not a substitute for professional review or a site survey and is subject to change without notice. The Grand River Conservation Authority takes no responsibility for, nor guarantees, the accuracy of the information contained on this map. Any interpretations or conclusions drawn from this map are the sole responsibility of the user. This map is not to be used for navigation.





Conestogo Lake Topography (pre-flood elevations)

Legend

Reservoir Extent @ 393 masl (CGVD28)

Reservoir Bottom Elevation - masl (CGVD28)
(Based on 1969 topographic mapping)

391 - 393

386 - 390

381 - 385

376 - 380

373 - 375

Watercourse

Conestogo Lake C.A.

Road

Wooded Area



0 500 1,000 Metres

Disclaimer: This map is for illustrative purposes only. Information contained herein is not a substitute for professional review or a site survey and is subject to change without notice. The Grand River Conservation Authority takes no responsibility for, nor guarantees, the accuracy of the information contained on this map. Any interpretations or conclusions drawn from this map are the sole responsibility of the user. This map is not to be used for navigation.



Guelph Lake Topography (pre-flood elevations)

Legend

Reservoir Extent @ 348 masl (CGVD2013)

Reservoir Bottom Elevation - masl (CGVD2013)
(Based on 1971 topographic mapping)

346 - 348

343 - 345

340 - 342

337 - 339

333 - 336

Watercourse

Guelph Lake C.A.

Road

Wooded Area



0 250 500 Metres

Disclaimer: This map is for illustrative purposes only. Information contained herein is not a substitute for professional review or a site survey and is subject to change without notice. The Grand River Conservation Authority takes no responsibility for, nor guarantees, the accuracy of the information contained on this map. Any interpretations or conclusions drawn from this map are the sole responsibility of the user. This map is not to be used for navigation.

